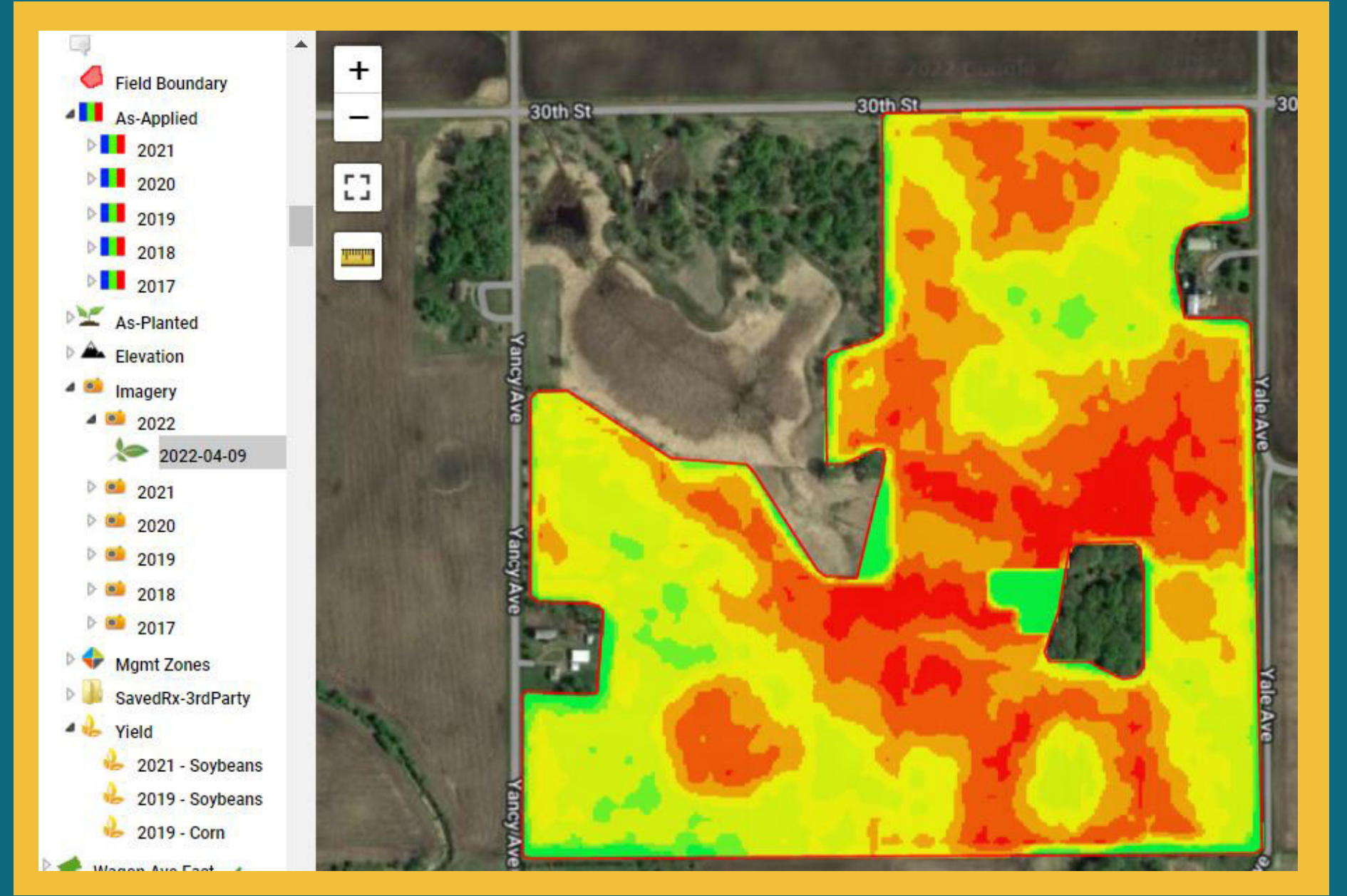




Centra Sota CONNECT RX



Connect Rx is Centra Sota's advanced precision ag offering. Utilizing the field level data collected each season, we can make educated, data-driven agronomic and economic decisions not only at the whole farm level, but on each acre.

Applying field level data to drive decisions for your farm is a year-long process that includes planning, implementation, and review of practices. This season-long program requires multiple in-office and in-field meetings to exchange and review information. Services included in this program are listed below.

Centra Sota Connect

- Connect Rx automatically includes basic level Connect

Management Zone Creation

- Creation of management zones from field layers such as Soil Data, Yield, or Satellite Imagery

Variable Rate Seeding Prescriptions

- Applying field attributes such as soil data or management zones to both corn and soybean seeding rates

Variable Rate Fertility Prescriptions

- Creation of variable rate fertility prescriptions influenced by management zones, soil fertility levels, real crop removal, and more.

Grid Soil Sampling

- Scheduling and execution of 2.5-acre grid soil samples taken consistently for uniform results

In Season Field Sample Collection

- Corn and Soybean tissue sample and collection during the growing season
- Soil Nitrate testing
- Corn stalk nitrate testing

Advanced Agronomic Reporting

- Yield by fertility, variety, zone, etc.

Economic Reporting

- Profitability mapping that can identify areas of success or improvement potential.

Truterra Metrics Reporting

- Field-level sustainability scoring that allows for easy visualization of conservation as well as easy access to carbon or other environmental markets.

In-Field Equipment Monitor Support

- Support for uploading and downloading field Rx files for planting, in-season application, and harvest data.

Customer Requirements

- Commitment to providing field-level agronomic data either digitally or written records (planting, harvest, and crop protection)
- Minimum acreage 400 acres or whole farm enrollment
- If desired for most accurate profitability mapping customer may choose to provide costs of land, equipment, management, and products when not purchased through Centra Sota. If customer does not want to share this information, we can utilize default prices to provide spatial profitability mapping.