



CENTRA SOTA CO-OP

Equipment Sales & Services

 Precision Planting



Ag Leader®



SERVICES OFFERED

- Full line of Precision Planting products
- On-farm service
- Meter calibration of any brand
- Offer a full line of Yetter and Martin row cleaners
- Offer a full line of AgLeader products
- Will install, repair and calibrate yield monitors, any brand
- Will completely service existing planters, opening disks, gauge wheels, bearing and much more.
- Will build planters from the ground up. We have access to Harvest International and Wilrich tool bars. Also, we have Precision Planting and Harvest International row units.
- Offer liquid solutions for planters, sidedress bars and sprayers.

FINANCING OPTIONS

- AgQuest
- Northland Capitol
- Diversified Financial

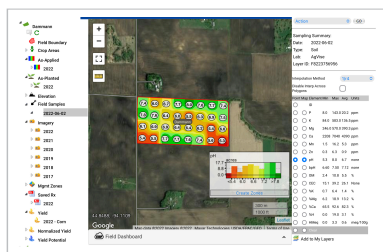
PRECISION PLANTING DISCOUNTS

October 1 - October 31 - 4%

November 1 - December 31 - 2%

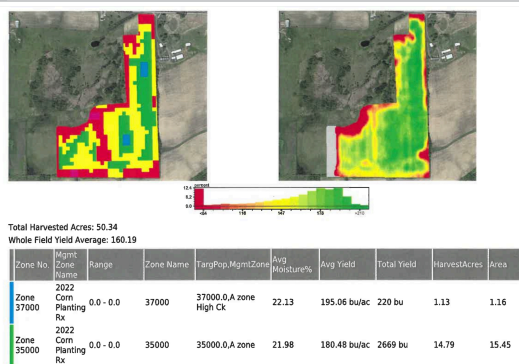
Monitor trade-in program runs through February 2023. For any green box (Gen 2 or Gen 3) the grower will get a \$300 credit with the purchase of a gen 3 monitor.

Data Collection & Management and Services - Centra Sota Connect



Centra Sota Connect Data Management Platform -

One location for all field level data, ready to be analyzed and applied when needed!



Climate Fieldview



Climate FieldView helps you easily collect, store and view field data for more of the inputs you manage through the season.



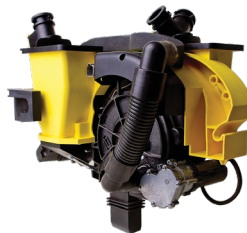
PRECISION PLANTING



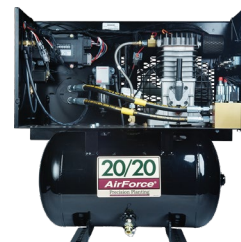
Wave Vision:
A more accurate seed tube sensor using radio wave technology instead of infrared beam. Great for dusty conditions.



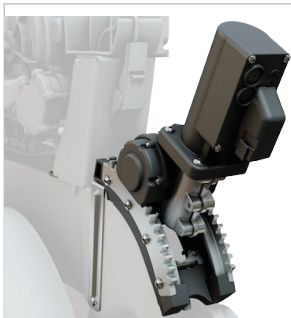
Row Flow:
A way to control hydraulic motors and clutches will control any brand on the market.



vSelect:
This will enable your planter to plant multi hybrids.



Airforce:
Give the grower on the go down force utilizing your current air bags on your planter, or we can add air bags to your planter.



Smart Depth:
Giving the grower on the go seed depth control.



Furrow Force:
Allowing the grower to control closing wheels down pressure from the cab.



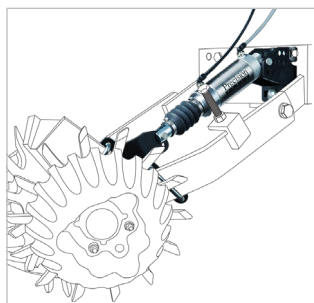
20/20:
Easy to use, giving singulation down force and easily diagnosing problems on your planter, essential for running all systems related to Precision Planting.



Delta Force:
Giving you fast accurate down force control; an average ROI of 8 bushels.



vDrive:
Easy row by row population control. Bringing swath control to a new level; it will take the place of chains, bearing hydraulic motors. Average ROI of 5 bushels.



CleanSweep:
Simple on the go row cleaner with pressure and depth control.



SpeedTube:
Bringing the seed right down to the seed furrow. Giving the extra speed you need to get your crops in on time.



vApply:
Giving the grower row by row liquid control. Will work for liquid fertilizer, spraying and side dressing.

ROW CLEANERS

CLOSING WHEELS



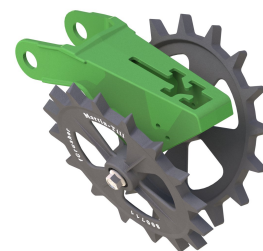
Martin-Till Row Cleaner:
Martin Till attachments make planting into high levels of residue possible. 4 inches of vertical travel, choice of spike or razor wheels.



Yetter Row Cleaner:
The most compact row cleaner available. Floating or locked cleaning positions, available with a range of residue management options.



Yetter Closing Wheels:
Twisted spikes enhance seed-to-soil contact and help create the ideal seed environment, leading to even emergence and higher yields.



Martin-Till Closing Wheels:
9.5 lb. cast iron crusher closing wheel. Long life drafted tooth keeps its entire foot print on the ground, no more wearing one side of plastic until it has to be flipped.

AG LEADER GUIDANCE OPTIONS

GPS RECEIVER SYSTEMS



STEERCOMMAND Z2



STEADYSTEER



DUALTRAC



Complete guidance systems controlled by Ag Leaders InCommand Displays provides hands-free assisted steering. Paired with a GPS receiver to provide WWAAS to RTK accuracy.



HARVEST INTERNATIONAL TOOL BAR DEALERSHIP



Our Harvest International dealership allows us to provide high-end planter bars that are built to integrate with aftermarket brands such as Precision Planting, Ag Leader, Yetter and Martin-Till. The end result is a top of the line planter custom built to our customers specific needs.

LABOR / METER CALIBRATION SERVICES



All meter calibrations will be charged \$35 for initial test stand run. If they need repair, we will charge an hourly rate of \$95/hr to make repairs. Most meters will not be charged extra; the extra charge will be mainly for finger meters.

General labor rate is \$95/hr. We start charging when we leave the shop. For large installs, price will be worked into quote.

